



*PadreParole (NO DATE)*  
*Unsigned Collage, 7.5"x5.25"*  
*\$400*

**JUDY WAPP**  
*VisuAlchemy*

CATALOGUE 2024



*Bessie Wapp, on stilts, channels Elvis Presley to serenade her mother Judy with a tearful rendition of 'Only You' at the opening reception of VisuAlchemy on Friday, MArch 22, 2024. Photo by Bobbi Barbarich.*

## **JUDY WAPP ART FELLOWSHIP AWARD**

The Judy Wapp Art Fellowship is an annual arts award given to a self-identified artist to aid in said artist's pursuing a specific project or change in direction of their art. The Fellowship recipients include, but are not limited to, young art students. Artists of all ages can benefit from financial assistance. Recipients will live within the boundaries of the Regional District of the Central Kootenays, BC where Judy has lived for over 50 years.

The Fellowship was established in 2024 by Judy Wapp and her family. It was inspired by a formative experience Judy had as a young artist. While in her 20s attending the Art Students League of New York, she received a MacDowell Fellowship for study and travel. She used the Fellowship to travel to and live in France and Spain, spending a year painting. We, her family, feel that handing on some version of that experience to other artists will be a fitting memorial to her artistic life.

Judy's retrospective show at the Nelson Museum, Archives & Gallery, *VisuAlchemy*, closes on June 22, 2024 and after that most of the pieces will be available for purchase. The selling prices of the art pieces are intended to be affordable to enable the art to go to friends and allies in the Kootenays. All the money from the sale of the artwork will be held in a dedicated bank account and a minimum of \$2,000 will be awarded annually until the funds are exhausted. Each year one applicant will be selected by a small group of trustees (family members and a couple of other volunteers – no one will be paid for this work). A dedicated email account [wappaward24@gmail.com](mailto:wappaward24@gmail.com) has been set up to handle purchase and other inquiries, applications, and nominations. (Artists can make an application on their own behalf or be nominated by someone else.). Applications should include an introduction to the artist, a brief description of how the money would be used, and two references (peers who know the artist's work).

### **Guidelines for use of funds by recipient:**

Eligible: art supplies, studio expenses, tool purchases, education courses, finding a mentor, finding an apprenticeship, ground travel (think sketchbook in a backpack), water travel, food

Especially encouraged: experimenting, transitioning to another medium or form (example poet to songwriter), new horizons, working out-of-the-box,

Ineligible: throwing a party, air travel (we are in a climate emergency – let's act like it!)

- *David Everest, Bessie Wapp, and Josh Wapp*





Growth Company (NO DATE)  
 Unsigned Collage, 7.5"x10"  
 \$400



Waterlines, 2001  
 Signed Collage, 10"x13.5"  
 \$450



*Shipping Out, 2003*  
Signed Collage, 13.5"x19"  
\$475



*Untitled, 1996*  
Signed Collage, 13.5"x17"  
\$475



*Past Lives, 1998*  
*Signed Collage, 12.5"x9.25"*  
 \$450



*Conquest, 2002*  
*Signed Collage, 10"x14"*  
 \$450





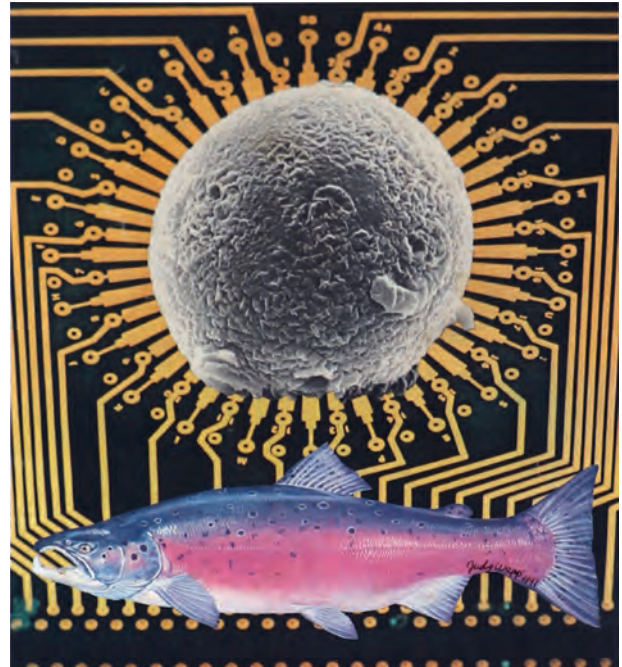
*History Test, 1998*  
*Signed Collage, 10"x13.5"*  
 \$450



*How Do I Look, 1994*  
*Signed Collage, 12.5"x12"*  
 \$425



*Enigma, 1980*  
Signed Collage, 10"x14"  
\$450

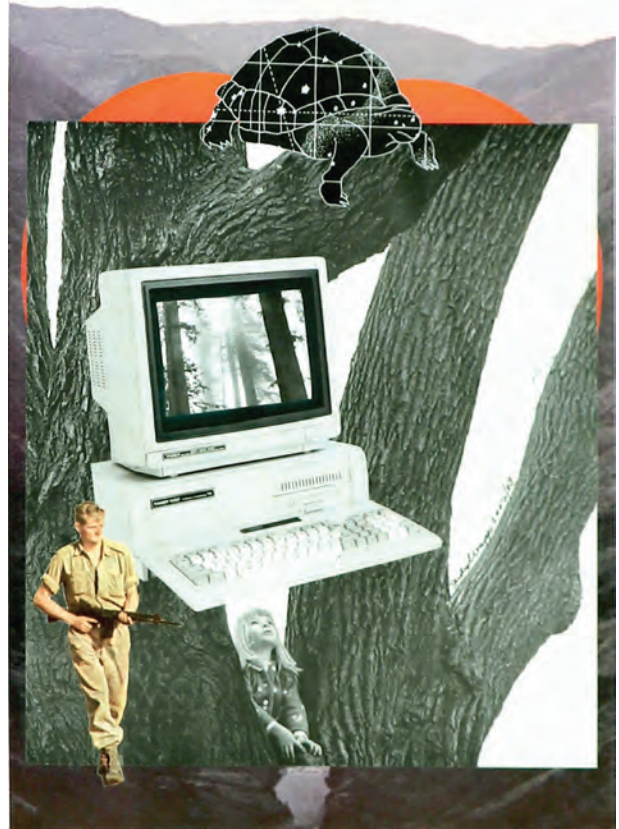


*Codification, 1991*  
Signed Collage, 7.5"x8.5",  
\$400





*New, 2004*  
*Signed Collage, 10.25"x12.5"*  
 \$450



*Untitled, 2004*  
*Signed Collage, 10"x13.5"*  
 \$450







*On View, 2002*  
*Signed Collage, 10.25"x14"*  
 \$450



*Question Authority (NO DATE)*  
*Unsigned Collage, 9.75"x12"*  
 \$450

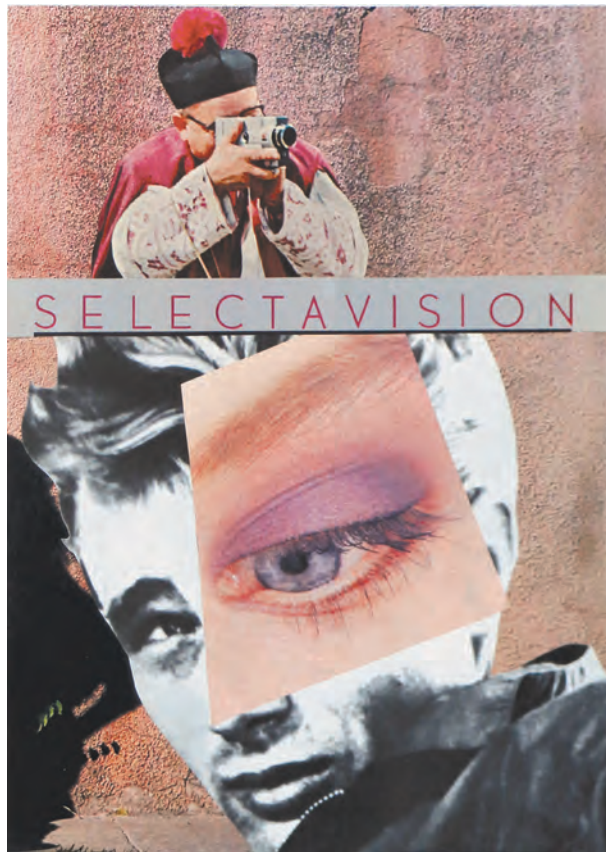




Untitled, 2001  
 Signed Collage, 19"x11"  
 \$475



*Handicapper, 2000*  
Signed Collage, 10"x13.5"  
\$450



*Vision Quest, 1994*  
Signed Collage, 7.75"x10.5"  
\$425





*Neuro Site (NO DATE)*  
*Unsigned Collage, 8.75"x10.5"*  
*\$400*

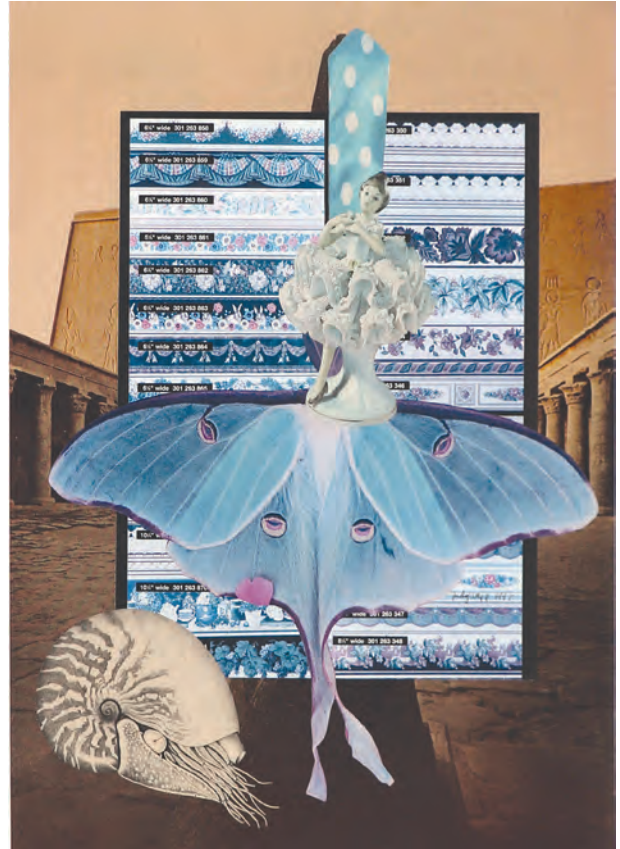


*Karmic Noodge, 2002*  
*Signed Collage, 10"x14"*  
*\$450*





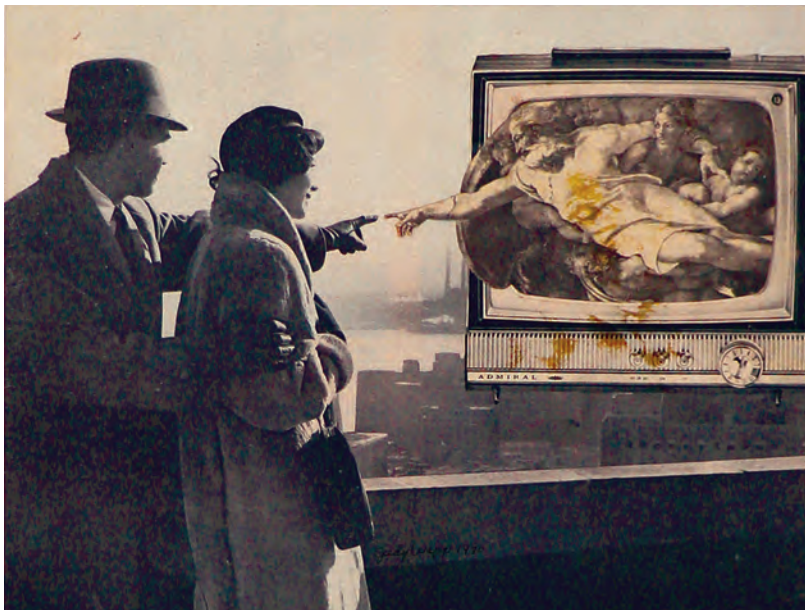
*Differential Equation, 1994*  
Signed Collage, 10"x13.5"  
\$450



*Resonance, 1997*  
Unsigned Collage, 10"x14"  
\$450

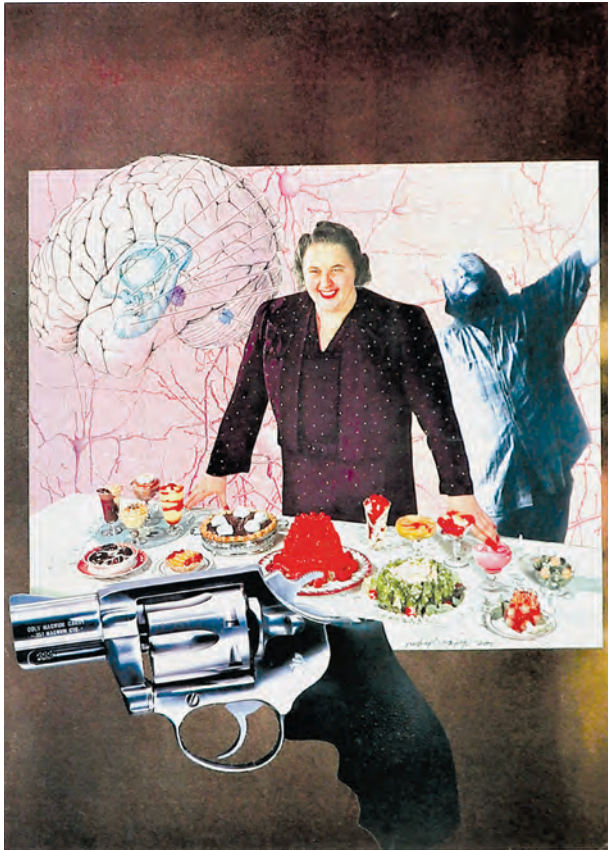


*Now What, 1984*  
*Signed Collage, 11.5"x8.5"*  
*\$425*



*Future Tense, 1990*  
*Signed Collage, 9"x7"*  
*\$425*





*God Bless America, 2001*  
Signed Collage, 10"x14"  
\$450



*Habitat, 1997*  
Signed Collage, 10"x14"  
\$450





*Settlers, 1995*  
*Signed Collage, 8"x11"*  
 \$425



*Management Training, 1998*  
*Signed Collage, 10"x13"*  
 \$450

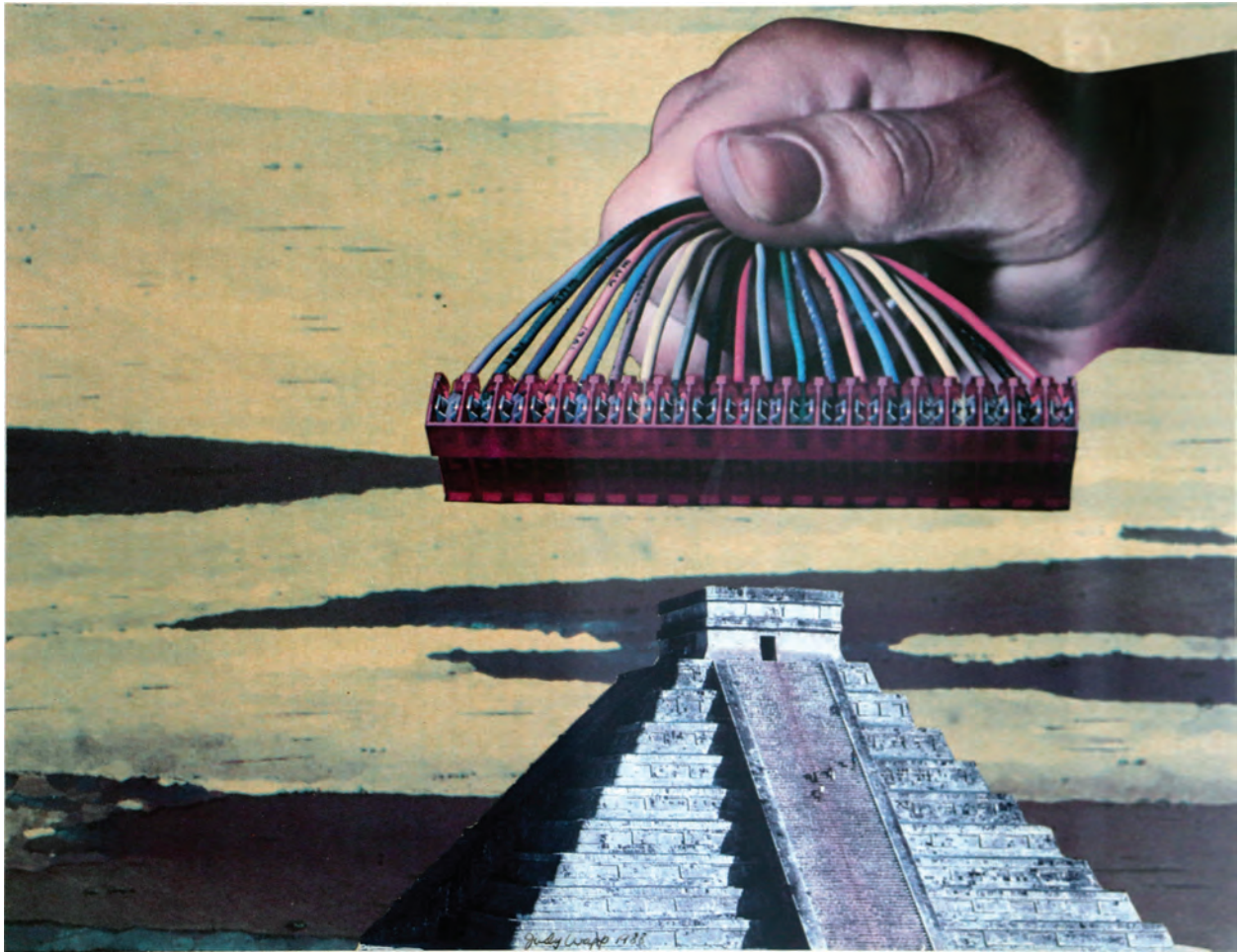


*Tie-in, 1997*  
*Unsigned Collage, 10"x13.5"*  
 \$425



*Cousins Contained, 1995*  
*Signed Collage, 7.75"x10.25"*  
 \$400



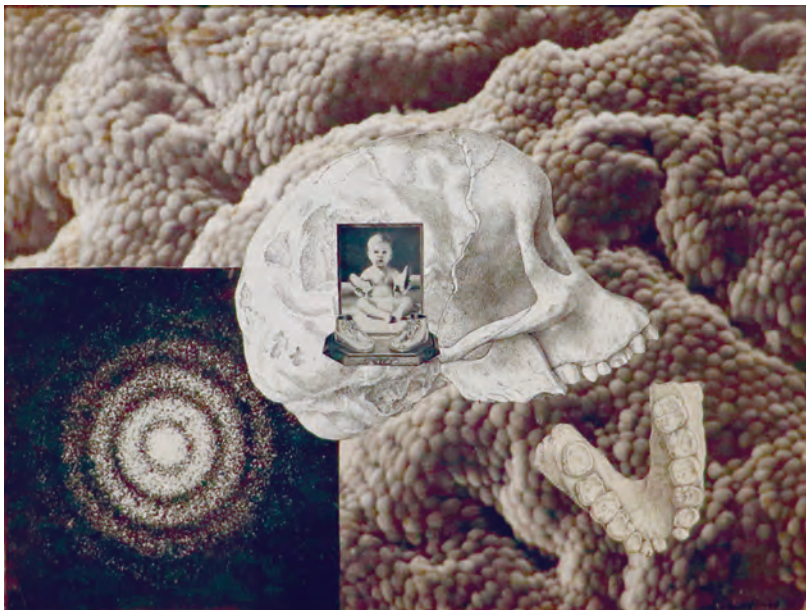


*Handed Down, 1988*  
*Signed Collage, 10.5"x8"*  
*\$425*





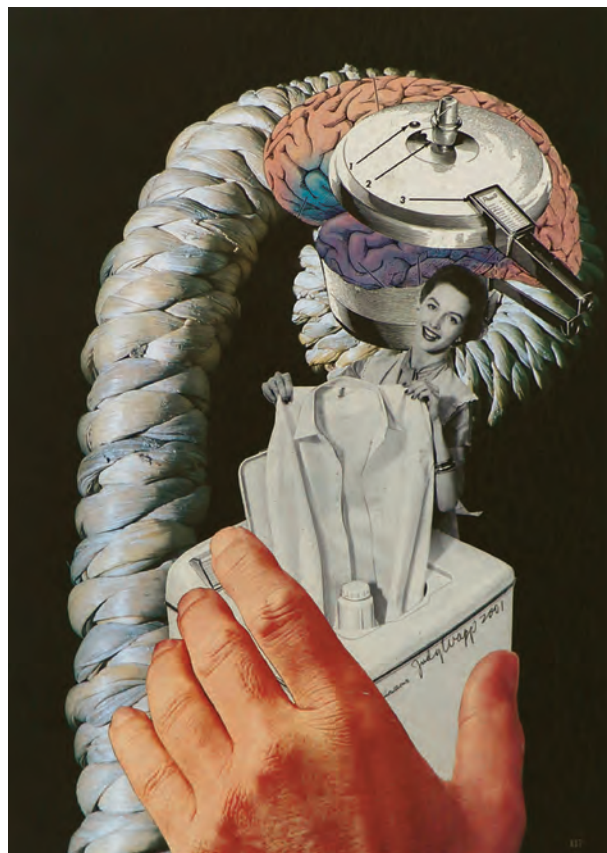
Untitled, 1985  
Signed Print, 11"x8"  
\$425



Things to Come, 1985  
Signed Collage, 11"x8"  
\$425



*On View, 1995*  
*Signed Collage, 10"x14"*  
 \$



*Cautionary Tales, 2001*  
*Signed Collage, 8"x11"*  
 \$425





*Bounds, 1997*  
Signed Collage, 8.75"x10.5"  
\$425



*TOP RIGHT: Collection, 1995*  
Signed Collage, 8.75"x8.5", \$425

*BOTTOM RIGHT: Family Circle, 2013*  
Signed Collage in wooden frame, 11.5"x11.5", \$425







*Time Exposure, 1998*  
Signed Collage, 10"x12"  
\$450



*Heartland, 1999*  
Signed Collage, 10"x13"  
\$450

TOP LEFT: *Gamekeeper II*, 1998, Signed Collage in wood frame, \$450

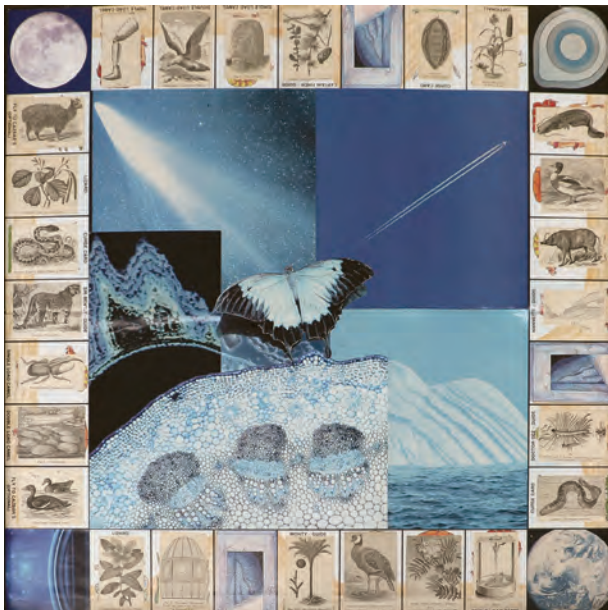
BOTTOM LEFT: *Gamekeeper I*, 1998, Signed Collage in wood frame, 12"x12", \$450

TOP RIGHT: *The Critical Interval*, 1998, Unsigned Collage in wood frame, 12"x12", \$450

BOTTOM RIGHT: *Untitled on Wall (Outside the Garden)*, 1994, Signed Collage in wood frame, 15.5"x15.5", \$475



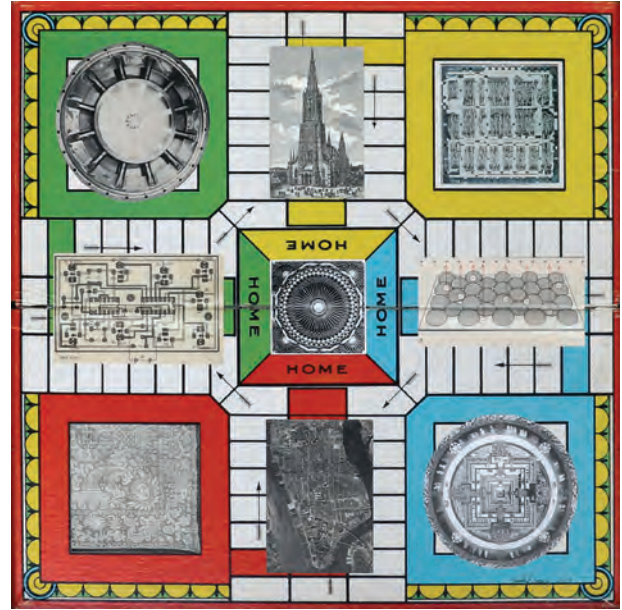








*Entrance, 1995*  
*Signed Collage in wood frame, 18"x18"*  
*\$500*



*Pattern Language, 2009*  
*Signed Collage in wood frame, 15.5"x15.5"*  
*\$475*

*TOP LEFT: Frame Flower, 1995, Signed Collage in wood frame, 18.5"x18.5", \$500*

*BOTTOM LEFT: Blue Notes, 2013, Signed Collage in wood frame, 22"x22", \$500*

*TOP RIGHT: Game Coordinates (NO DATE), Signed Collage in wood frame, 15"x15", \$475*

*BOTTOM RIGHT: Winnings, 1995, Signed Collage in wood frame, 19"x19", \$475*



Untitled (Brush With Fame)  
 Unsigned Print, unframed 16.5"x21"  
 \$100



Untitled (Back to the Land)  
 Unsigned Print, unframed 16.5"x21"  
 \$100









TOP: *Nineteen Sixty-Four*, 1995  
Signed Print, 13.5"x9", \$200



*Compelling Reasons*, 1992  
Signed Print, 10.5"x15.5"  
\$300



*The Handgun*, 1986  
Signed Collage, 9"x12.5"  
\$450



Judy Wapp: *VisuAlchemy*

March 23 to June 22, 2024

©2024 Nelson Museum, Archives & Gallery

Catalogue design by Stephanie Delnea,  
Nelson Museum, Archives & Gallery

Printed in Canada by Hall Printing. First printing 2024.